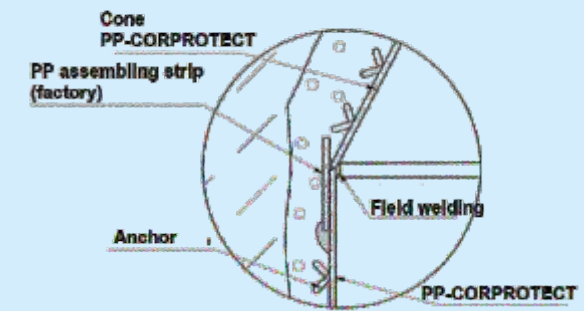


**Full lining of the manhole structure  
FLEXLINER with PP-CORPROTECT**

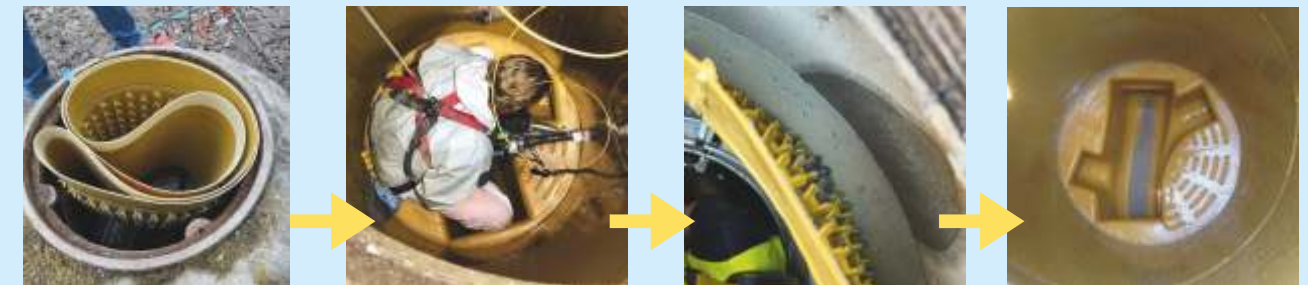
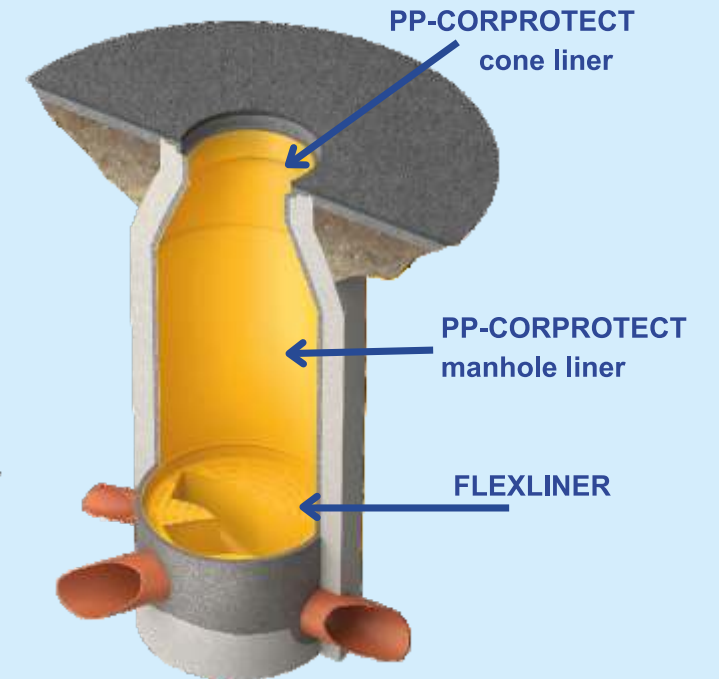
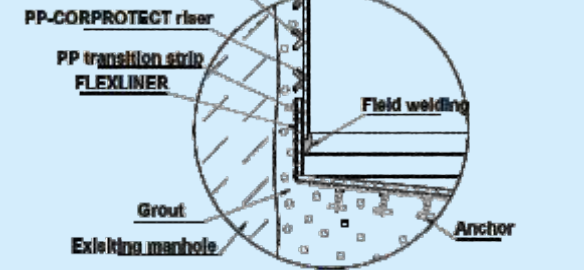
The transition strip incorporated into the FLEXLINER enables the vertical continuation of the rehabilitation with both PP-CORPROTECT lining and FRP materials.



**Liner connection to the PP-CORPROTECT cone with PP assembling strip**



**Liner connection with PP transition strip to FLEXLINER**



**PREDL-FLEXLINER IN COMBINATION WITH A FRP PIPE LINER**



## A permanent, fast and high-quality rehabilitation

With the PREDL FLEXLINER, an environmentally friendly, trenchless manhole rehabilitation is possible within a very short time. For installation, the FLEXLINER is folded **undivided and non-destructively** through the cone into the manhole, and unfolded back to its original size in the manhole.

By using the FLEXLINER rehabilitation method and modern 3D laser scan manhole data acquisition, an optimal preparation of the rehabilitation work and a significant reduction in the effort on site is possible.

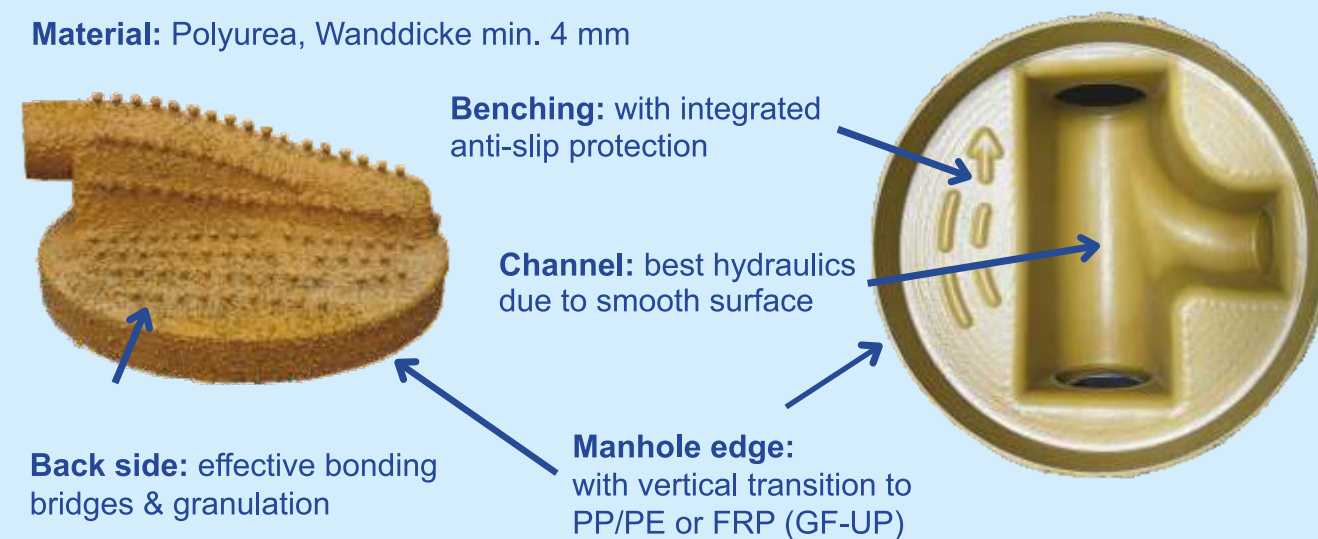
- > a hydraulic optimized copy of the old manhole by 3D laser scan.
- > coherent and permanent connection to the old manhole by means of concrete backfill
- > further vertical rehabilitation with PP-CORPROTECT
- > 100% trenchless, NO large construction vehicles
- > Preservation of existing building materials conserves resources
- > Rehabilitation process with a service life of **approx. 50 years**

## Old manhole digitization and modelling



## Technical features

**Material:** Polyurea, Wanddicke min. 4 mm



## Installation of the FLEXLINER



Various connecting options can be used to the existing pipe, e.g. :

- FRP - socket for stainless steel clamp sleeve
- FRP-socket for short liner

